

PhysioSuite®

Temperature Monitor and Homeothermic Control Module / RightTemp®

Resistance	2,252 ohm
Tolerance	+/- 0.2° C
Accuracy	25°C to 45°C
Operating Temp.	-40°C to 80°C
Sensor Diameter	Ball Tip Diameter: 1.65 mm max Shaft: 1.5 mm
Time Constant	10.0 seconds
Dissipation Constant	0.75 m/W (° C)

Pulse Oximeter and Heart Rate Monitor Module / MouseSTAT®

Heart Rate	Up to 900 bpm
Resolution	1%
SpO ₂ Range	70 to 100%
Alarms	5, Programmable
Data Export	Yes
SpO ₂ Sensors	Soft Touch Paw Sensors (standard) Large Animal Clip Sensors Pup Sensors MRI Sensors

End-Tidal CO₂ Monitor Module / CapnoScan®

Transducer Type	Sidestream Sensor
Sample Rate	50 mL/min. +/- 10mL/min.
Initialization Time	< 15 seconds
Measurement Range	0 to 16%, 0 to 120 mmHg
Rise Time	< 60 ms
Resolution	0.1 mmHg 0.25 mmHg
Accuracy	0 to 150 mmHg, ±2 mmHg 0 to 69 mmHg 70 to 150 mmHg

*Our clinical department will be pleased to review your study protocol to confirm that our product will meet your specific study requirements.

Standard 1-Year Parts & Labor Warranty
(Premium 3-year warranty available).
Visit our website for more information.

Choose your PhysioSuite: **888.572.8887**



More innovative products for your research:

SurgiSuite

Surgical platforms



Shown with options:
Far Infrared Warming Controller & Pad,
LED Lighting and Magnification Kit

MouseSTAT® Jr.

Hand held pulse oximeter for mice and rats



RoVent® Jr.

Basic automated ventilator is ideal for mice, rats and small animals up to 1,250g



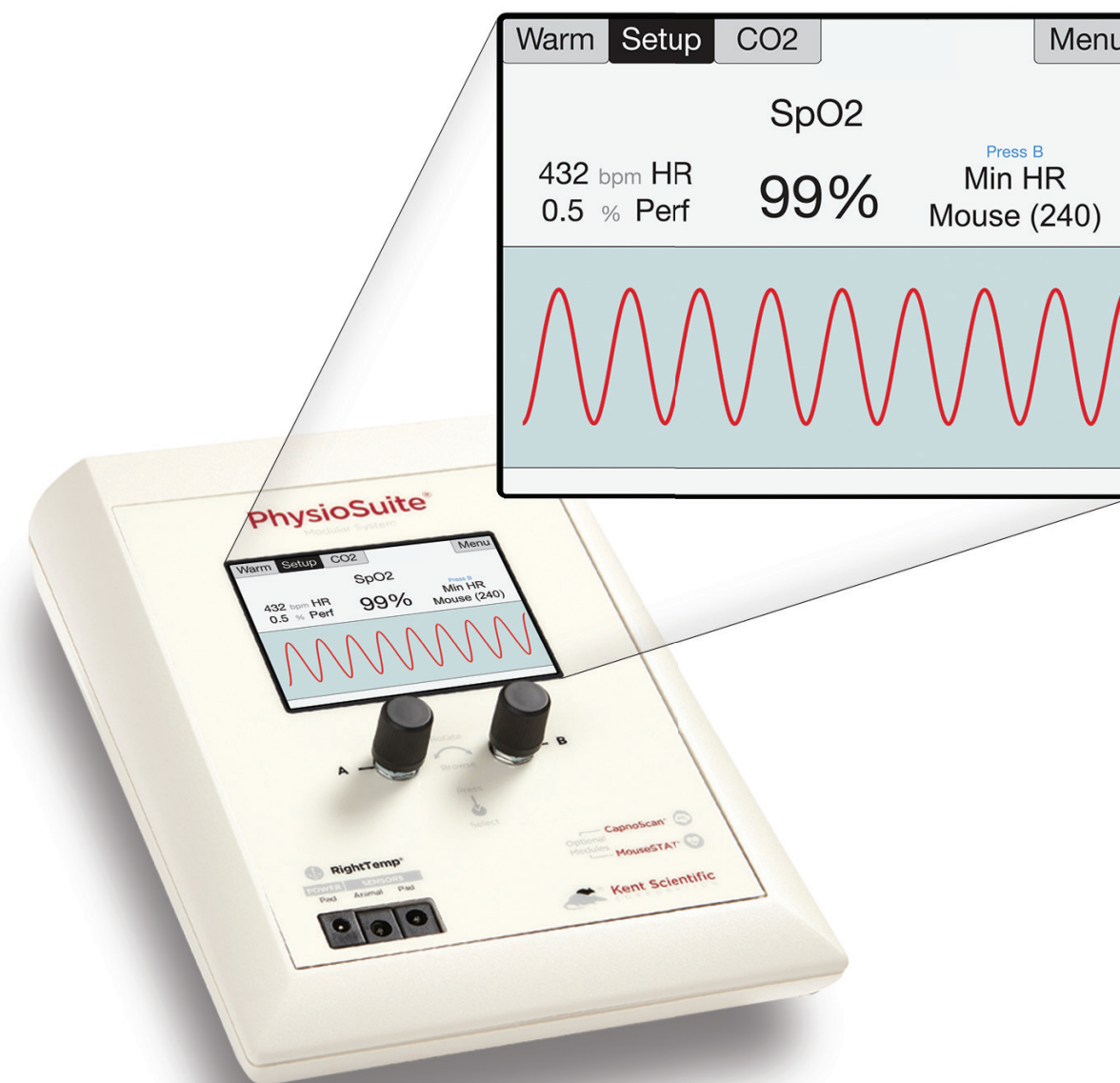
Intubation Stands

Intubate mice and rats while delivering isoflurane



PhysioSuite®

Multi-physiological monitor with warming, temperature control



1116 Litchfield Street
Torrington, CT 06790

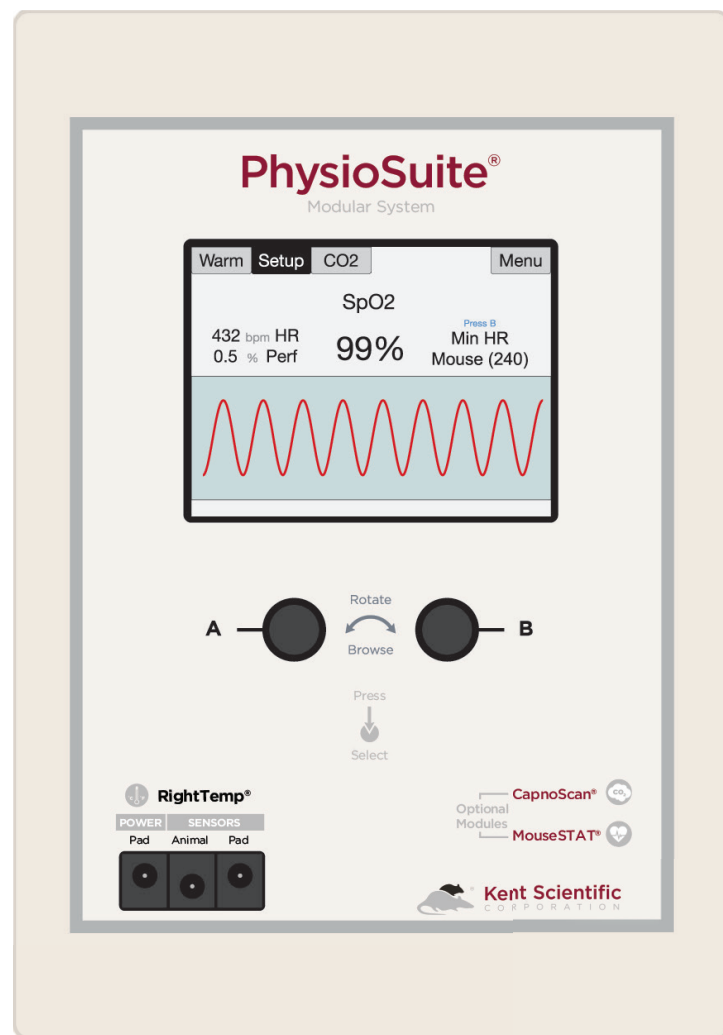
05.24.1.NP



PhysioSuite Modules

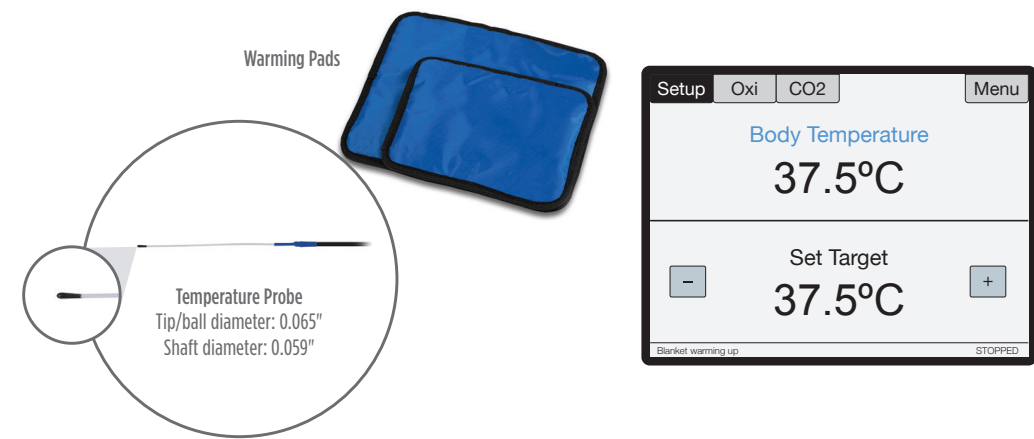
The PhysioSuite Modular System includes an integrated touch screen display, real-time recordings and 5 safety alarms. Internal memory provides data storage, with a mini USB for data output. The PhysioSuite is compatible with stereotaxic devices.

The PhysioSuite is essentially a box that you fill with the modules your research requires. Each module is a separate component that provides a specific function: warming, pulse oximetry and CO2 monitoring. Combine the modules you need now and add additional modules later as your research demands.



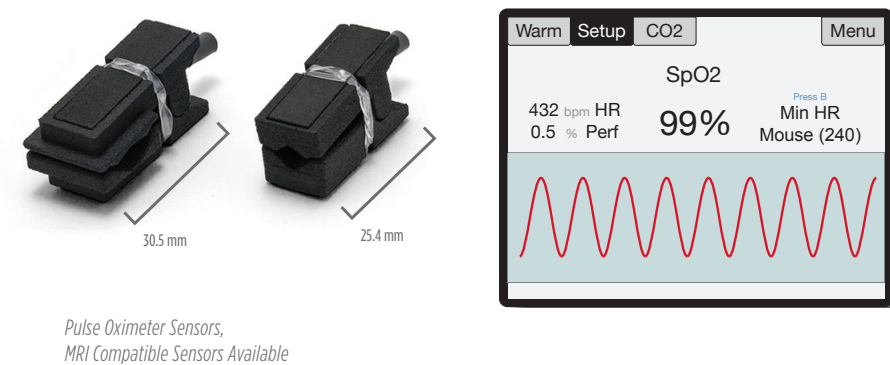
RightTemp® Temperature monitor and homeothermic control module

- Far infrared warming
 - Penetrates deep to safely warm the animal
- Flexible rectal probes
 - Standard with every system
- Pre-program animal temperature
 - Safely warm the animal without overheating
- Automatic feedback control
 - Self-regulate your animal's temperature



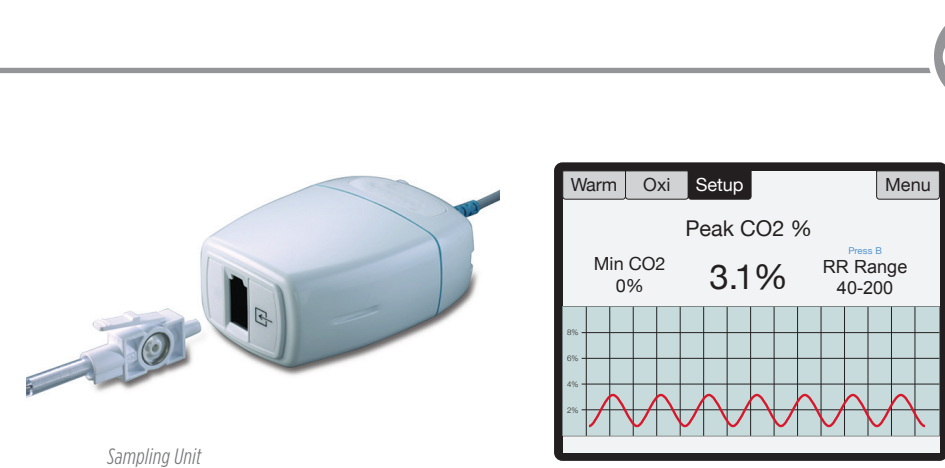
MouseSTAT® Pulse oximeter and heart rate monitor module

- Engineered for mice and rats
 - Accurately measures heart rates up to 900 bpm
- Soft touch paw sensors
 - Reduces pressure to maintain unrestricted blood flow
- Modular capability
 - Temperature and end-tidal CO2 monitoring modules
- Respiratory rate option available
 - Measures breaths per minute



CapnoScan® CO2 monitor module

- Highly sensitive infrared spectroscopy CO₂ sensor
 - Delivers clear, accurate capnogram
- Monitors end-tidal CO₂ measurements
- Low sampling rates
- Ideal for mice and rats
- Compensates for temperature, pressure and gas type
 - Allows for accurate measurements



What Your Colleagues Are Saying...

"The MouseSTAT pulse oximeter works very well, you literally place the sensor on the paw and it reads better than any rodent monitoring systems that I have looked into."

- Lead Researcher, US Pharmaceutical Lab

