

HIGH-FLOW Traditional Vaporizers



VetFlo™

Conventional Anesthesia System with Single and Multiple Anesthesia Systems

Kent Scientific's small animal and rodent anesthesia vaporizer is one of the easiest to use and most economical gas anesthetic systems on the market, with wide laboratory application including for in-vivo COVID-19 research.

Perfect for laboratory and veterinary anesthesia delivery, the VetFlo Anesthesia System is completely self-contained and portable.

3 reasons to choose VetFlo

- 1 New systems - never reconditioned or re-manufactured
- 2 Superior design, small footprint
- 3 Simple set-up and operation

System Includes

- Tabletop stand
- One inlet flowmeter, 0 to 1000 mL (A 200 to 4000 mL flowmeter is available in both single and multi-station systems, except on 6-channel systems)
- One set of inlet/outlet caps
- 2 Charcoal WAG canisters
- High-pressure oxygen hose with DISS fittings
- All the tubing and connectors needed
- The VetFlo Traditional Anesthesia System with isoflurane vaporizer includes a 3-year warranty.

VetFlo
 0-1 LPM..... \$3,273
 0-1 LPM Pole Mounted System..... \$3,845
 Starter Kit for Mice or Rats..... \$325, \$435
Starter Kits include sliding top induction chamber, low-profile anesthesia masks, 2 charcoal WAG canisters, all necessary tubing and connectors.

Multi-channel systems available for multiple animals



Starter Kit includes all the accessories needed to begin your procedure.



VetFlo systems are available on pole mounted stands for easy mobility.

Ordering Information

Toll-Free Phone: 888-5RATTUS (888-572-8887)
 Local Phone: 860-626-1172
 Fax: 860-626-1179
 E-mail: orders@kentscientific.com
kentscientific.com



Providing small animal researchers with over 30 years of innovation.



Anesthesia Products

LOW-FLOW

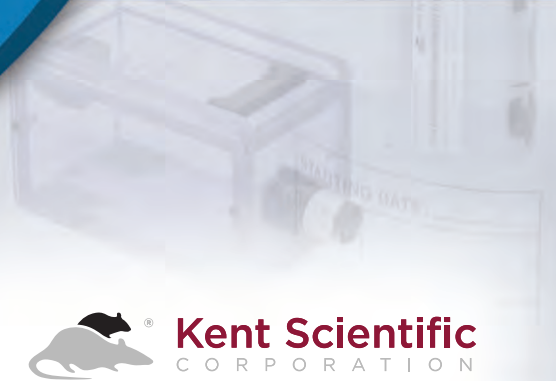


SomnoSuite®

HIGH-FLOW



VetFlo™



LOW-FLOW Electronic Vaporizers

Ambient Air, Less WAG, No Calibration.

No more using human amounts of anesthetic for a mouse!

Unlike Traditional Vaporizers, our Low-Flow Vaporizers are engineered with solid state electronics and an integrated electronic vaporizer which uses either ambient air or compressed gas to deliver isoflurane or sevoflurane anesthetic at low flow rates proportionate to the animal's size. This advanced design eliminates the need for annual certification that is required by traditional wick-design vaporizers. Using less anesthesia benefits the animal during procedures, and significantly reduces exposure of lab personnel to WAG while generating impressive cost savings. Kent Scientific Low-Flow Electronic Vaporizers are used in the world's leading pharmaceutical and academic laboratories to further advance training and research in a host of fields, including COVID-19 related research.

Features & Benefits of Low-Flow

- **Low flow rates**
Saves money by using less than 1 mL/hr of isoflurane
- **Built-in air compressor**
Uses room air or compressed gas
- **Automated anesthetic delivery system**
Ensures precision to 0.1% delivery of anesthetic
- **No servicing or calibration needed**
Cost-effective, reliable equipment
- **Induction chamber purge**
Minimizes WAG exposure

	SomnoSuite	SomnoFlo	VetFlo
Flow Rate			
Range	25 to 1,000 mL/min	100 to 1,000 mL/min	0.1L/min, 2-4 L/min
Setting	Animal weight (with flow rate displayed)	Flow rate (with animal weight displayed)	Flow rate (no animal weight displayed)
Manual override	Yes	Yes	N/A
Sensor	Electronic flow sensor (monitors and controls anesthetic delivery)	Electronic flow sensor (monitors and controls anesthetic delivery)	None
Operation			
Modes	Ambient air and compressed gas	Ambient air and compressed gas	Compressed gas
Anesthetic	Isoflurane and sevoflurane	Isoflurane and sevoflurane	Isoflurane and sevoflurane
Presets	User-selectable	User-selectable	None
Alarms	Yes	Yes	No
Purge	Yes	Yes	No
Maintenance	No annual calibration	No annual calibration	Annual calibration required
Application			
Multi-animal	Yes	Yes	Yes
Stereotaxic	Yes	Yes	Yes
Filling and Delivery			
Method	Glass syringe	Direct from bottle	Funnel or key fill
Capacity	5 mL and 10 mL	100 mL and 250 mL	250 mL
Accuracy	0.1%	0.1%	0.5%
Data			
Output	Yes	No	No
Internal storage	Yes	No	No
Optional Modules			
Available	Yes (RightTemp®, MouseSTAT®, RoVent®, CapnoScan®)	No	No
Warranty			
Standard (included)	1-year	1-year	3-year (vaporizer)
Basic (optional)	3-year	3-year	
Premium (optional)	3-year	3-year	

SomnoFlo®

The SomnoFlo is a compact, stand alone unit that delivers only the precise anesthetic required by the animal according to its weight with flows down to 100mL/min. Its built-in, automated anesthetic delivery system dispenses, refills, and empties the anesthetic when the procedure is done. Just connect your anesthetic bottle directly to SomnoFlo and the system automatically primes, ready for your procedure.

“Our SomnoFlo set up was easy and the digital functions of the vaporizer are a huge plus.”

Lab Director

SomnoFlo Low-Flow Vaporizer

Starting at.....\$5,473
 Starter Kit for Mice or Rats \$655, \$765
 Starter Kits include sliding top induction chamber, low-profile anesthesia masks, all necessary tubing and connectors.



SomnoSuite®

The SomnoSuite is designed with a precision syringe pump that delivers precise amounts of anesthesia. Like the SomnoFlo, its integrated electronic vaporizer uses either ambient air or compressed gas to deliver precise anesthesia according to the animal's size. SomnoSuite allows for the addition of modular physiological monitors within its compact design. All SomnoSuites are equipped with a RightTemp® temperature monitoring and homeothermic control module.

“The SomnoSuite system is phenomenal ... It is one of the best investments I've made for the lab!”

University Professor

SomnoSuite Low-Flow Vaporizer

Starting at.....\$5,473
 Modules\$4,373
 • MouseSTAT® Pulse Oximeter & Heart Rate Monitor
 • Rovent® Small Animal Ventilator
 • CapnoScan® End-Tidal CO₂ Monitor
 • RightTemp® Temperature Monitor & Homeothermic Control
 Starter Kit for Mice or Rats \$655, \$765
 Starter Kits include 2 glass syringes, sliding top induction chamber, low-profile anesthesia masks, 2 charcoal /WAG cannisters, all necessary tubing and connectors.

Estimated Yearly Operational Savings

Low use 100 hours/yr

Electronic
SomnoFlo
SomnoSuite

Traditional
VetFlo

You can save
\$3,320

Medium use 250 hours/yr

Electronic
SomnoFlo
SomnoSuite

Traditional
VetFlo

You can save
\$8,160

High use 500 hours/yr

Electronic
SomnoFlo
SomnoSuite

Traditional
VetFlo

You can save
\$16,920